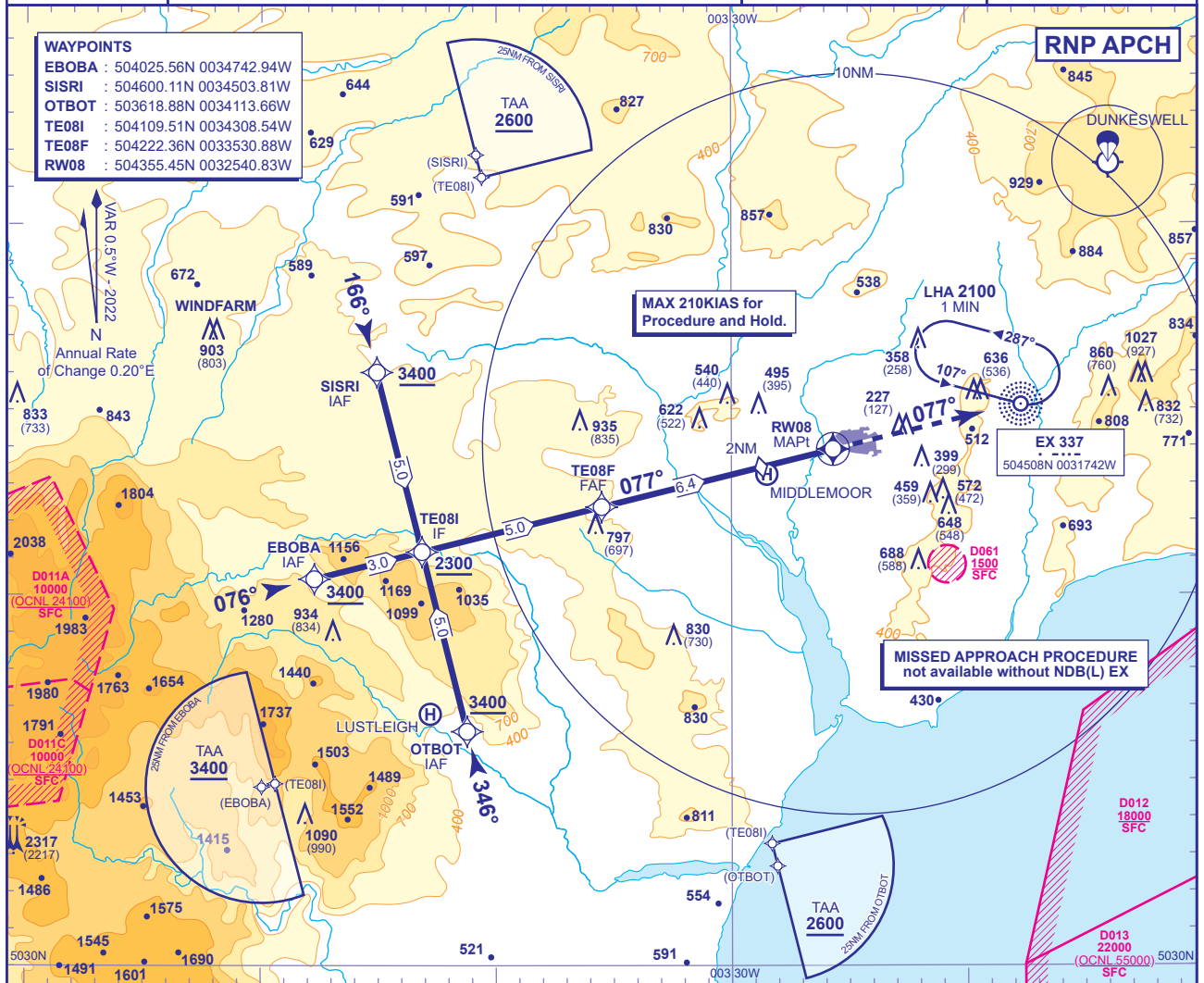


EXETER

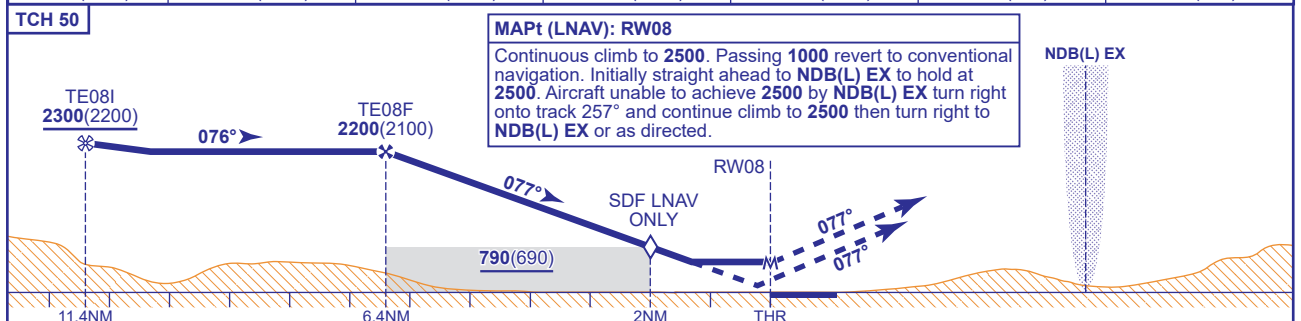
RNP
RWY 08
(AT A,B,C,D)

APP	128.980	EXETER APPROACH	AD ELEVATION 102
TWR	119.805	EXETER TOWER	THR ELEVATION 100
RAD	128.980, 123.580	EXETER RADAR	OBSTACLE ELEVATION
ATIS	119.330	EXETER INFORMATION	2325 AMSL (2225) (ABOVE THR)
			BEARINGS ARE MAGNETIC



RECOMMENDED PROFILE VNAV - Vertical path Angle 3° (LNAV 5.24%), 318FT/NM

NM to RW08	6	5	4	3	2 (SDF)	1
ALT(HGT)	2060(1960)	1740(1640)	1420(1320)	1100(1000)	790(690)	470(370)



Aircraft Category		A	B	C	D	Rate of descent	G/S KT	160	140	120	100	80
OCA (OCH)	RNAV/VNAV	480(380)	480(380)	480(380)	480(380)		FT/MIN	850	740	640	530	420
	LNAV	560(460)	560(460)	560(460)	560(460)							
VM(C)OCA (OCH AAL)	Total Area	700(598)	880(778)	1090(988)	1090(988)							

CHANGE (12/21): EGNOS AND LPV REMOVED.